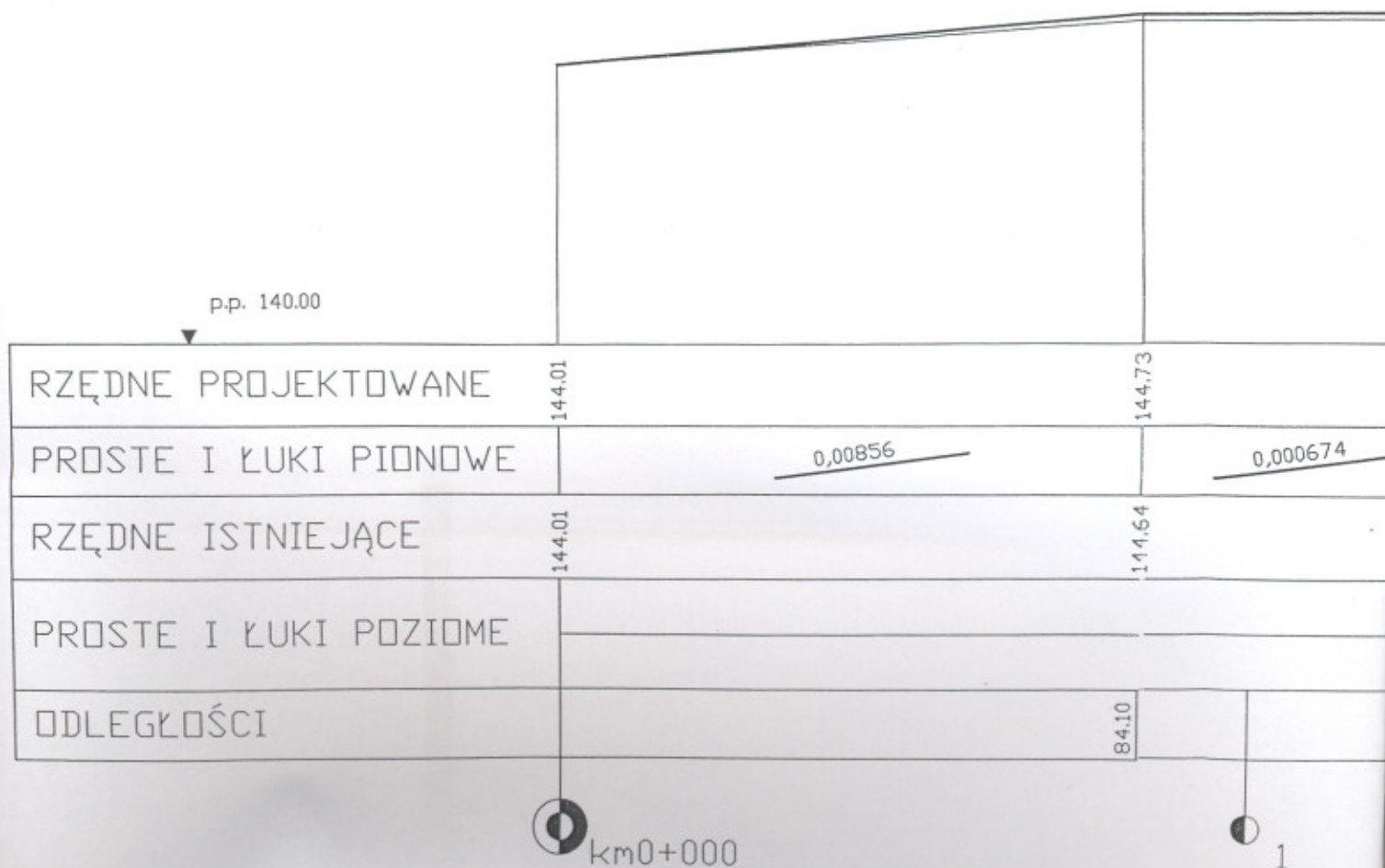


Objekt	Przebudowa drogi gminnej Domar Pietraszki-Glinnik Odcinek III w km 0+000-1+877		
Stadium	Projekt Techniczny		
Rysunek	Profil podłużny		SKALA 1:100/10
Autor projektu	Romuald Dąbrowski UAN.II.7342 - 59/93 DDDP - 44 - 94	Data i podpis	W skrajności Nr 11431.0.1 drog uprawniaj załrocie drog przepustów
		Data i podpis	
Kreślił			

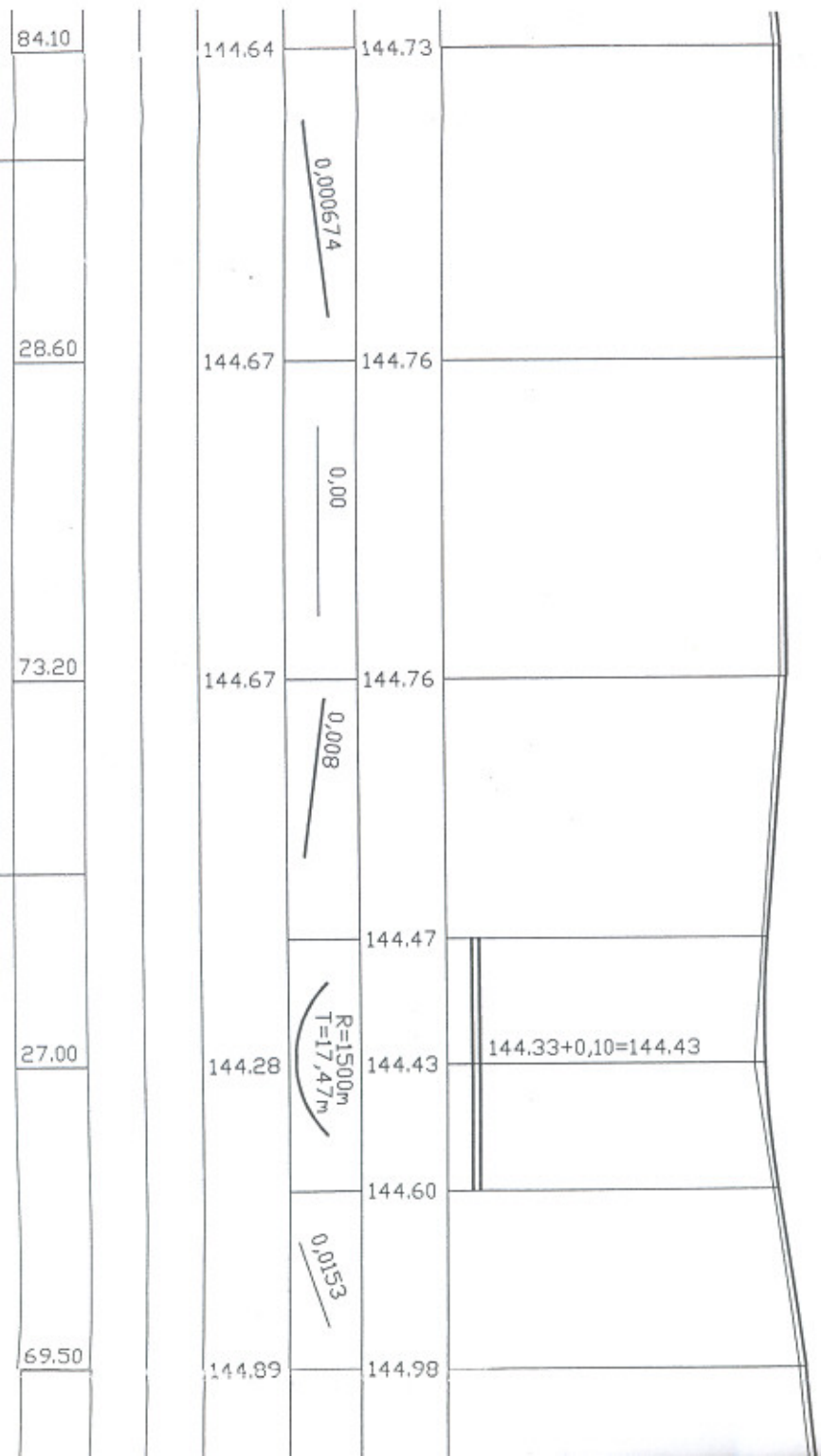


gmina Domarowo-
0+000-1+877

ziny

SKALA :
1:1000/1000

Data	14.04.2014
podpis	<i>[Signature]</i>
Data	14.04.2014
podpis	<i>[Signature]</i>



3



25.60

145.41

145.50

0.00927

4



79.50

145.84

145.95

0.008366

28.60

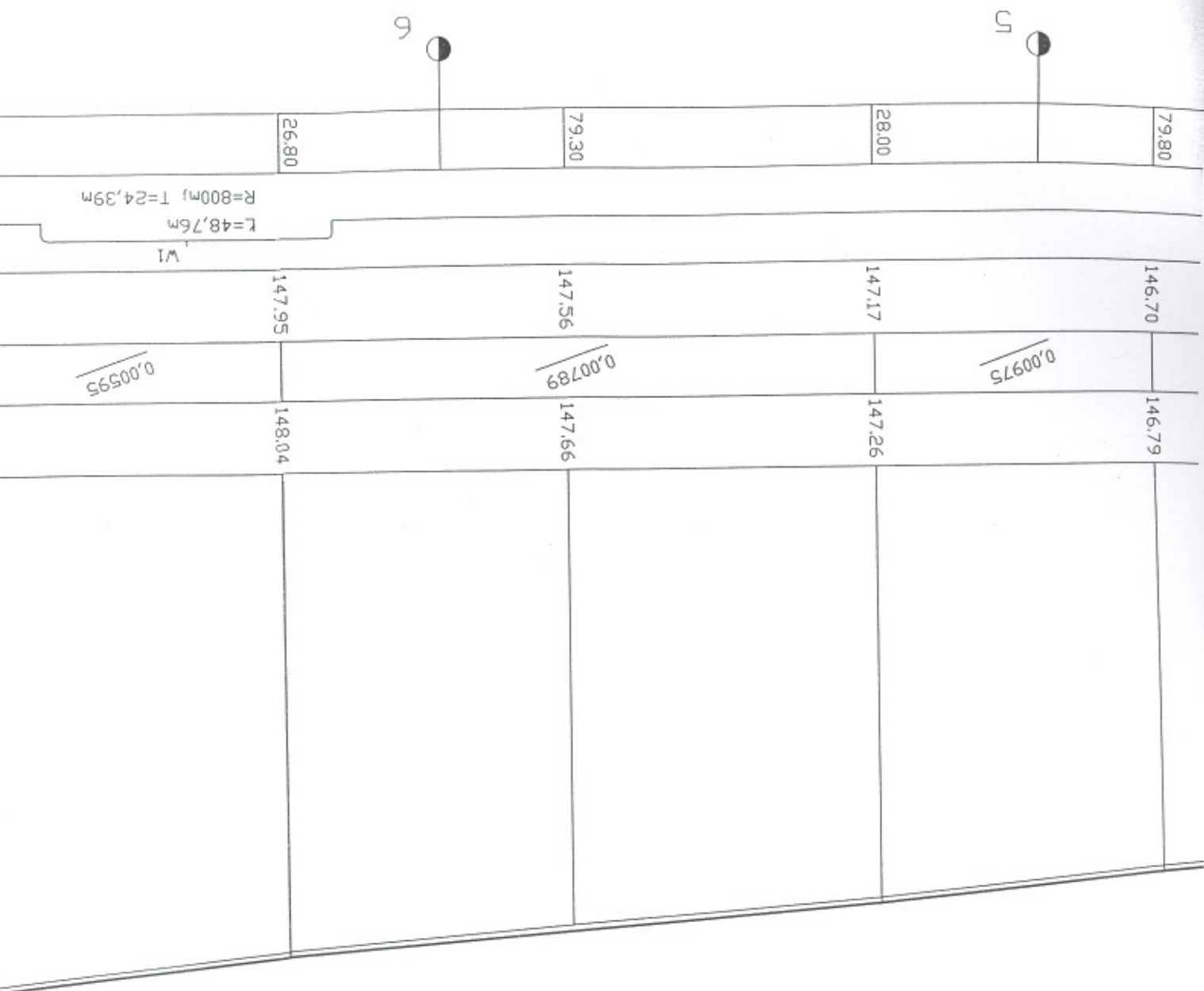
146.27

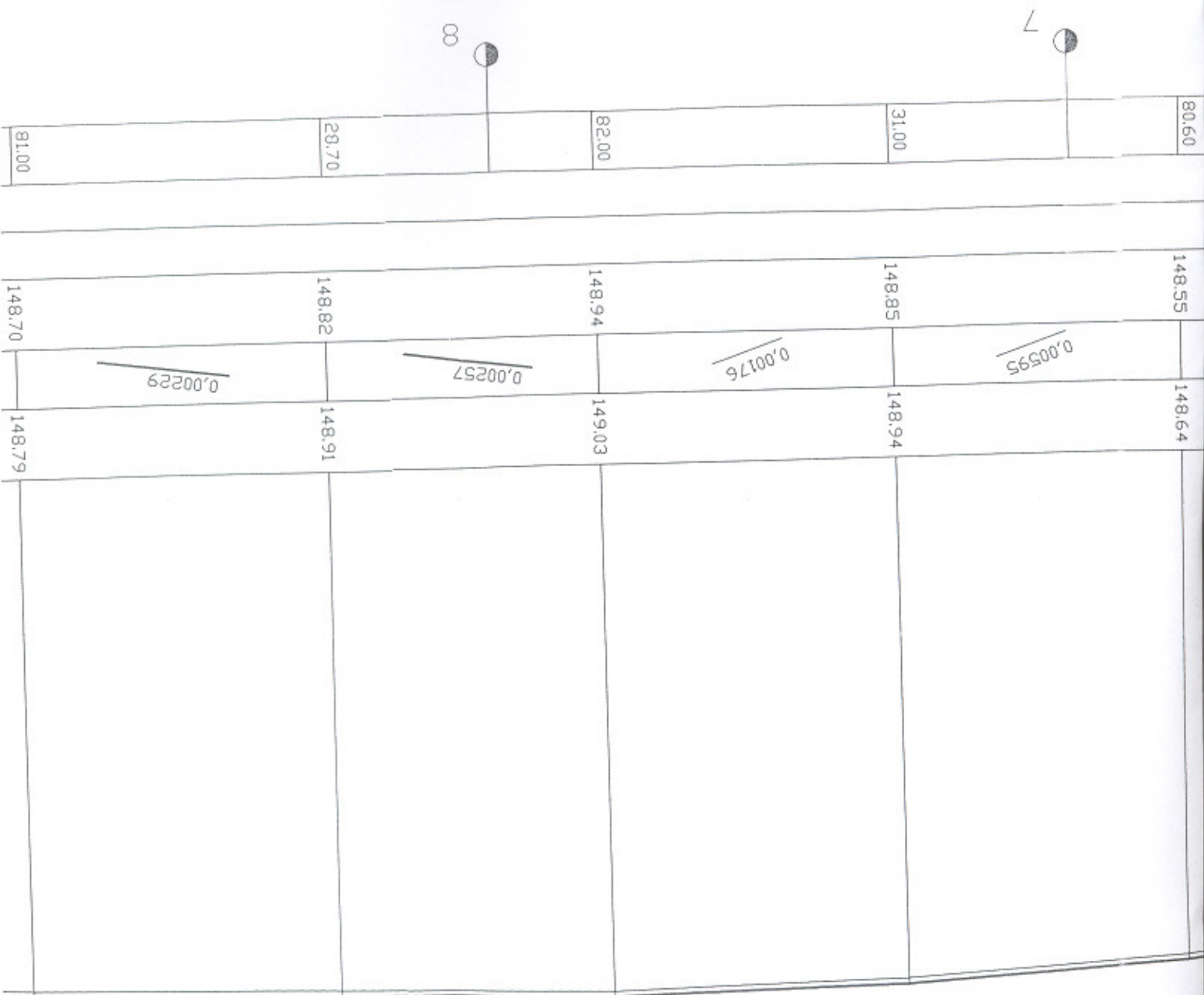
146.36

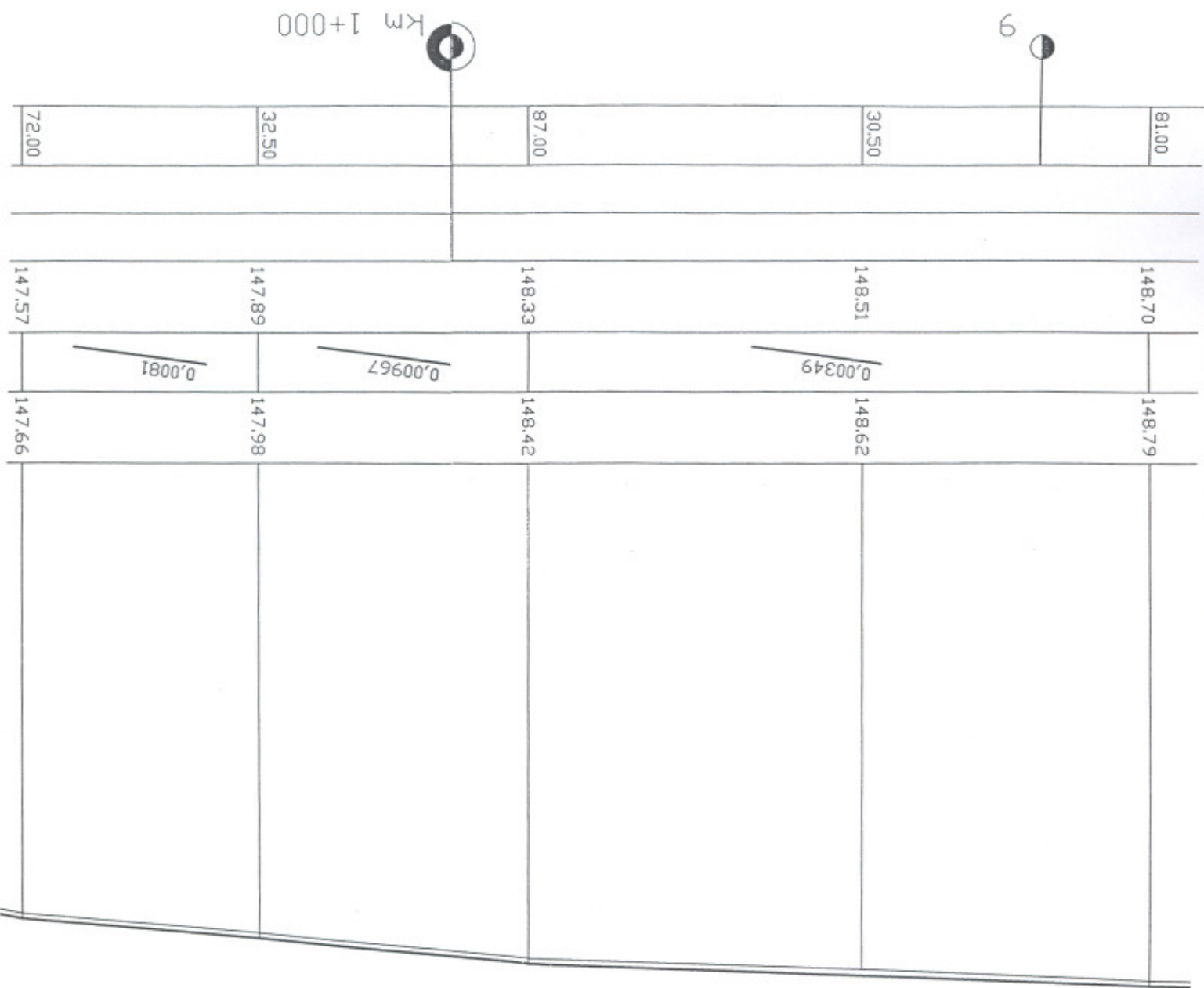
79.80

146.70

146.79

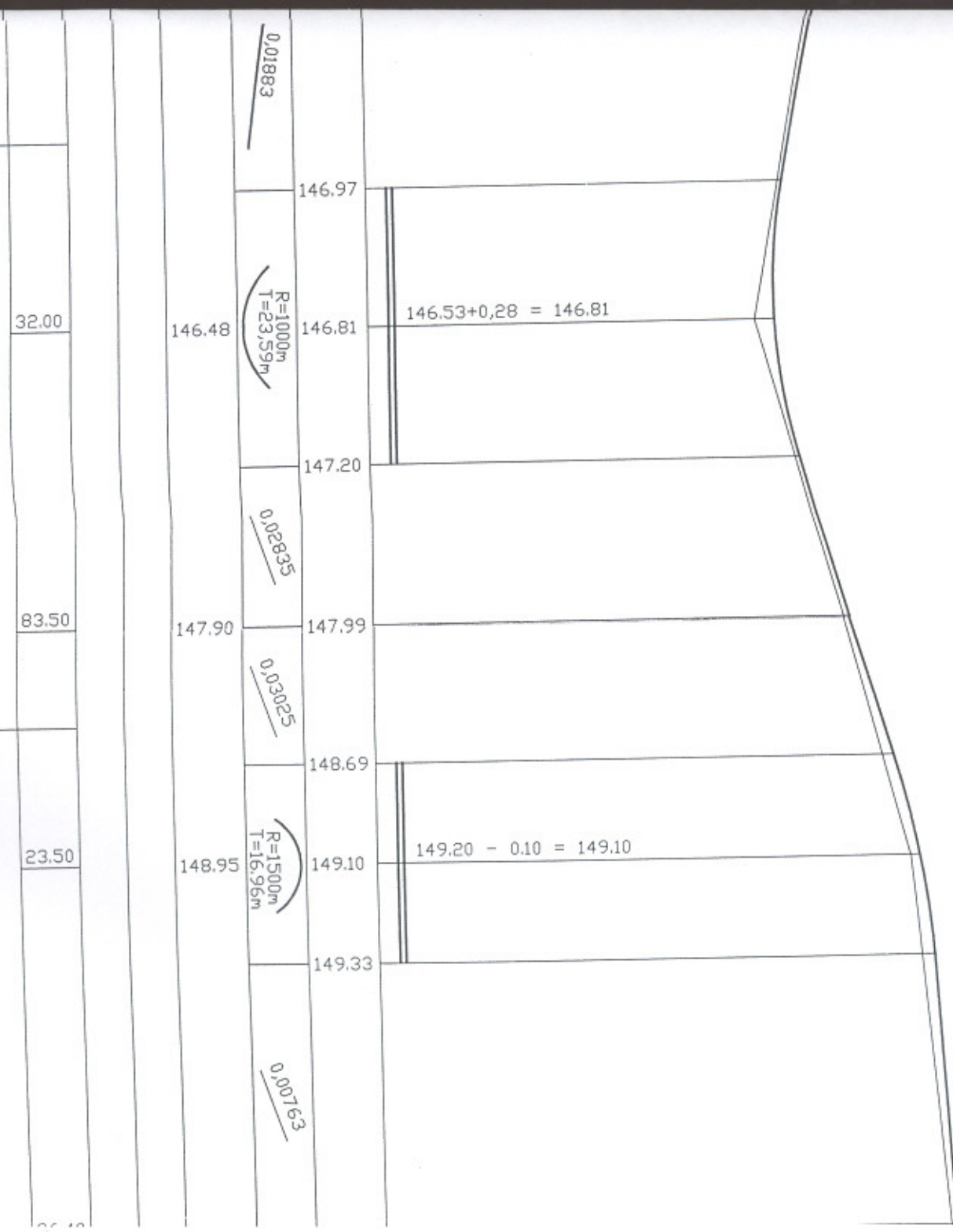


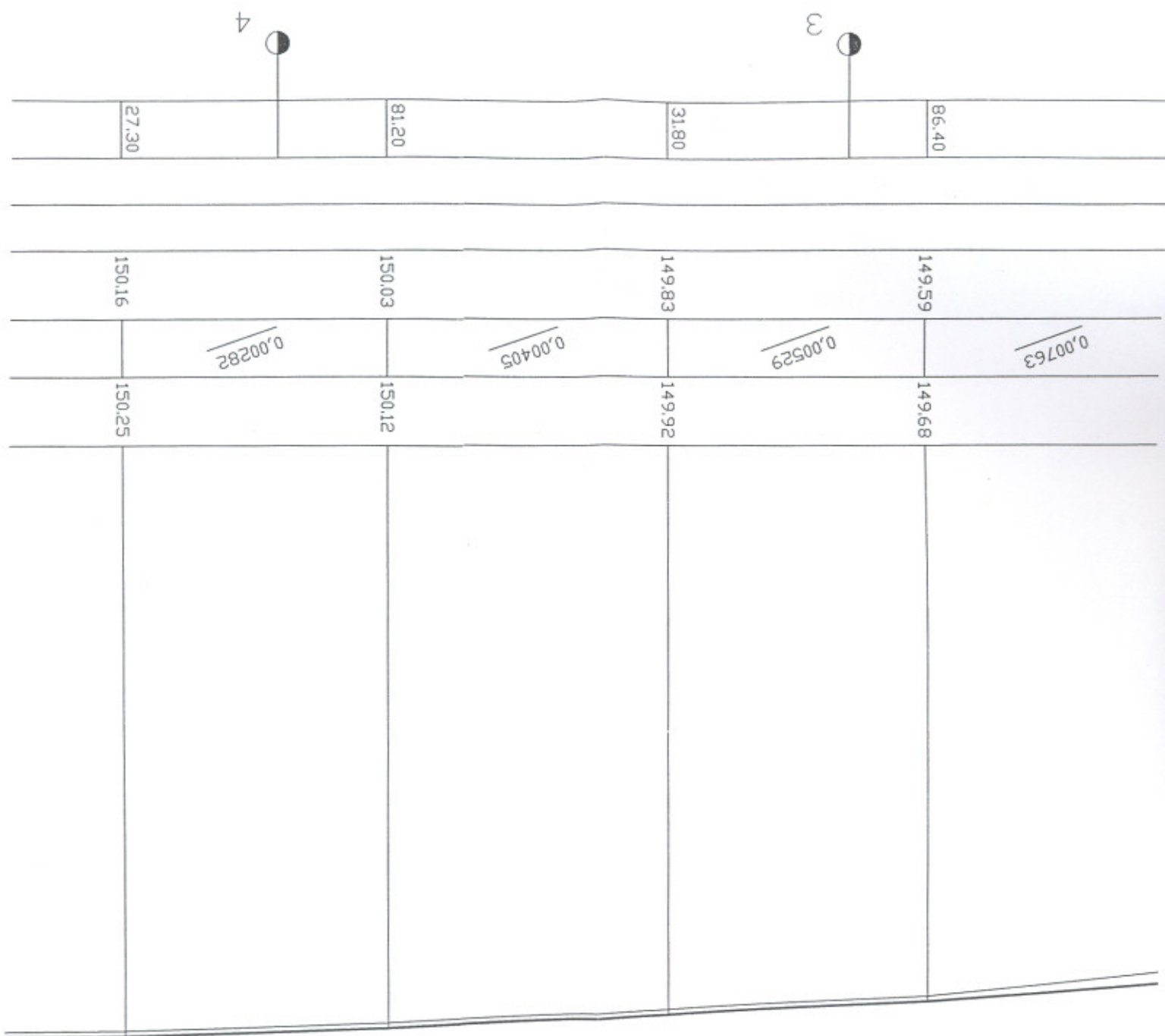




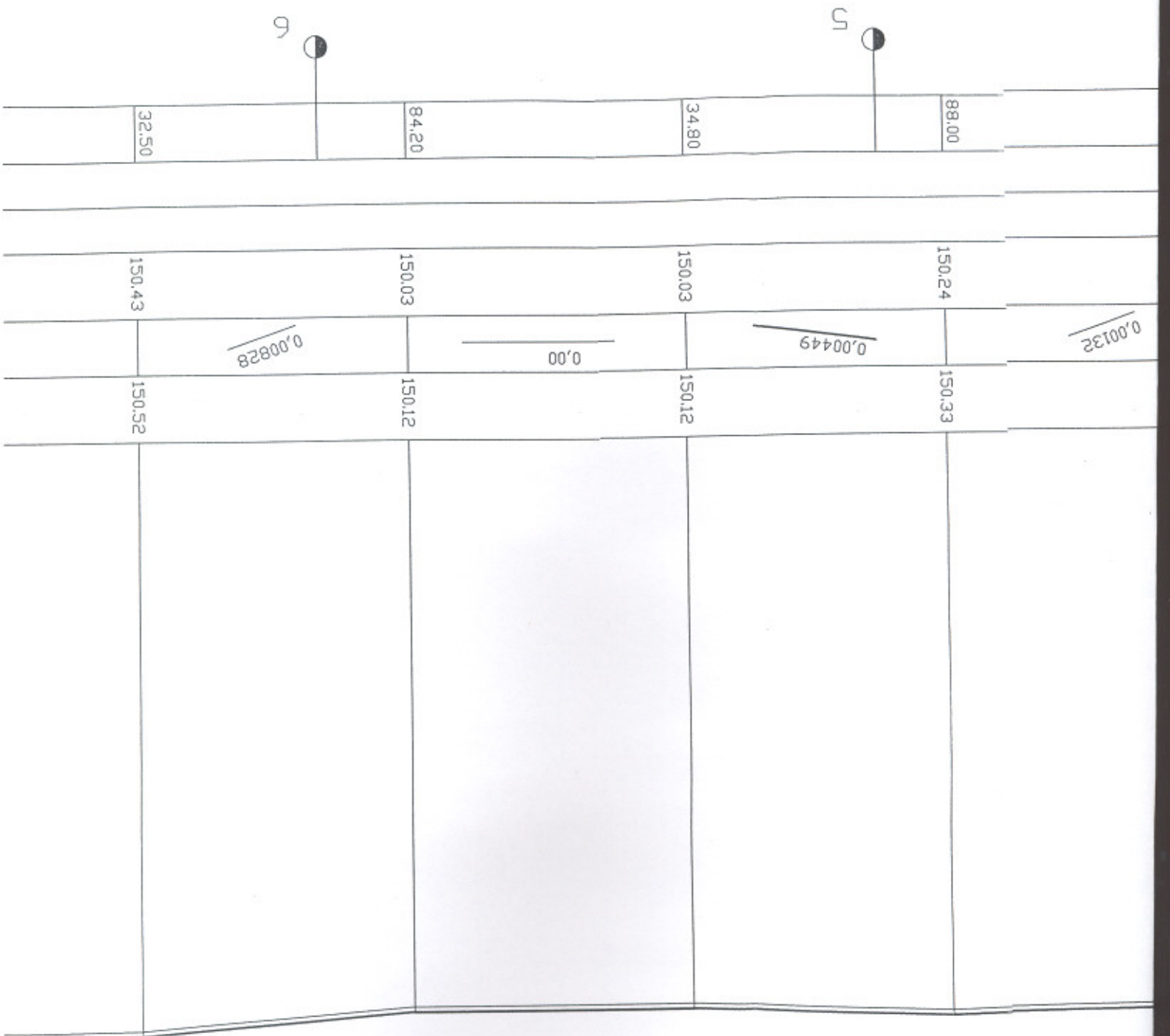
1

2





5



32.50	150.43	150.52	
66.00			
3.30			
38.00	150.60	150.69	
67.00	150.70	150.81	
95.00	150.90	151.00	
23.00	151.10	151.20	

W2

0.00226

0.00029

0.00414

0.00699

00

K.T. km 1+877

[illegible]