


Obiekt	Przebudowa drogi gminnej Pietraszki-Glinnik Odcinek II w km 0+000-2	
Stadium	Projekt Techniczny	
Rysunek	Profil podłużny	
Autor projektu	Romuald Dąbrowski UAN.II.7342 - 59/93 DODP - 44 - 94	Inta i podpis
Kreślił		Inta i podpis



 km0+000

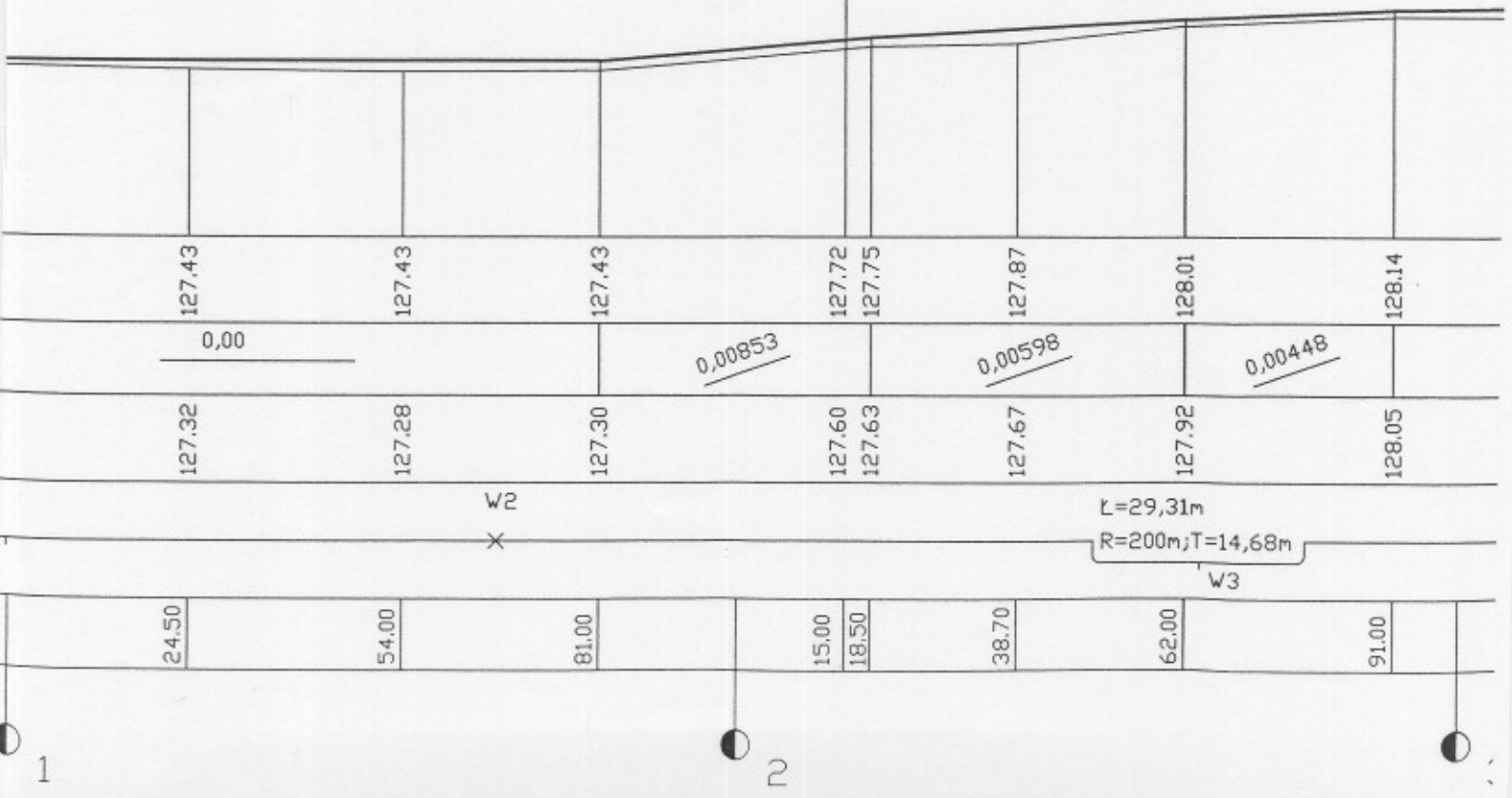
ul. Domanowo-
+662

SKALA :
1:100/1000

Projektant: *M. Gajda*

Instytut Inżynierów Budowlanych
ul. Krakowska 2, 00-611 Warszawa
tel. 22 634 32 00
www.inz.pl
Instytut Inżynierów Budowlanych
ul. Krakowska 2, 00-611 Warszawa
tel. 22 634 32 00
www.inz.pl

ul. Mata (odc. I)





5

26.00

43.00

70.00

96.50

50.00

78.50

6.00

6

7

132.83

133.27

133.87

134.35

134.60

134.50

134.30

$\frac{0.002888}{/}$

$\frac{0.00211}{/}$

$\frac{0.01736}{/}$

$\frac{0.000467}{/}$

$\frac{0.00035}{/}$

$\frac{0.00727}{/}$

132.92

133.41

133.98

134.44

134.69

134.59

134.39



7

8

6.00
38.30
68.50
96.80
26.00
55.00
87.00

0727	134.30	134.39
$\frac{0.02167}{}$	133.60	133.69
$\frac{0.02564}{}$	132.80	132.92
$\frac{0.02055}{}$	132.10	132.19
$\frac{R=1500m}{T=15.41m}$	131.50	131.91
0.00	131.50	131.67
$\frac{0.0137}{}$	131.50	131.59
$\frac{R=1500m}{T=20.14m}$	131.10	131.43
	131.10	131.28



9

8.00

36.00

62.50

92.00

22.00

53.00

83.00



km 1+000

9M

131.30

131.70

132.20

133.00

133.90

134.60

135.20

131.41
131.42

131.79

132.29

133.09

134.02

134.69

135.33

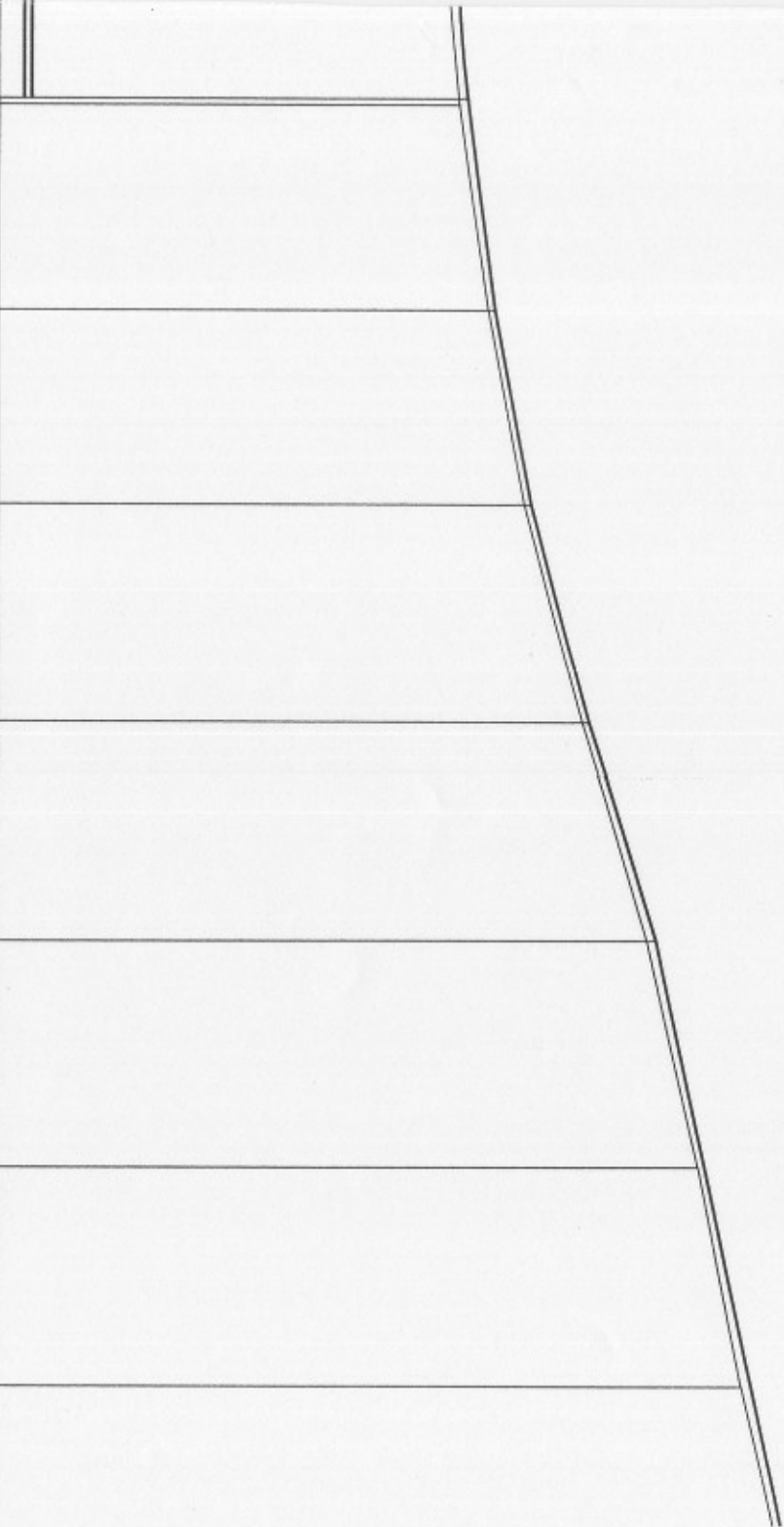
$\frac{0.01131}{\text{---}}$

$\frac{0.01887}{\text{---}}$

$\frac{0.02712}{\text{---}}$

$\frac{0.0031}{\text{---}}$

$\frac{0.02149}{\text{---}}$



2

3

39.20
68.00
31.00
60.50
90.70

136.20
136.50
136.90
137.20
137.50
137.50

$\frac{0.01324}{}$
$\frac{0.01168}{}$
$\frac{0.0009175}{}$
$\frac{0.000163}{}$

136.29
136.63
137.00
137.30
137.59
137.64



4

5

22.00
 51.50
 88.50
 11.00
 39.00
 66.00
 93.00
 21.00

137.60
 137.50
 137.50
 137.54
 137.74
 138.03
 138.13
 138.24

0.00067

0.00714

0.01185

0.00345

137.69
 137.67
 137.64
 137.63
 137.83
 138.15
 138.24
 138.34

138.24	138.34	138.37	138.24	138.22	138.19	138.01	137.80
<u>1345</u>	<u>0,0012</u>	<u>0,0041</u>		<u>0,000893</u>	<u>0,00792</u>	<u>0,01074</u>	<u>0</u>
138.13	138.24	138.28	138.15	138.11	138.10	137.92	137.71

5	21.00	46.00	78.00	5.00	34.00	61.50	88.00
6							

7

8

9

15.00	137.42	137.51
42.60	137.11	137.20
69.00	136.87	136.96
94.00	136.45	136.57
17.00	136.02	136.11
34.00	135.59	135.69
58.00	134.97	135.06
83.50	134.45	134.54

$L=57.84m$
 $R=150m, T=29.29m$

V7

0.01074

0.01123

0.00991

0.0156

0.02

0.0247

0.02625

0.0204

0.00737



Km2+000

1

63.00
83.00
8.50
35.00
62.00
87.00
15.00
40.00

L=60.08m
R=1500m, T=30.04m

W/8

134.64	134.73
134.84	134.93
134.89	134.98
134.82	134.91
134.44	134.53
134.02	134.13
133.64	133.73
133.32	133.41

0.01

0.001996

0.00264

0.01407

0.016

0.01429

0.0128

0.00714



1.8

68.00	133.12	133.21
94.00	133.02	133.13
22.00	132.91	133.04
48.00	132.87	132.96
77.00	132.76	132.87
3.00	132.69	132.79
31.80	132.62	132.71
59.00	132.66	132.75

2

3

0,003125

0,00298

0,00147

1.8



4

5

59.00
86.50
13.00
41.50
68.50
96.00
22.00
50.00

6M

132.66	132.75
132.81	132.90
132.88	132.97
133.08	133.17
133.27	133.36
133.50	133.59
133.88	133.97
134.39	134.48

$\frac{0.00545}{}$

$\frac{0.00254}{}$

$\frac{0.00702}{}$

$\frac{0.00704}{}$

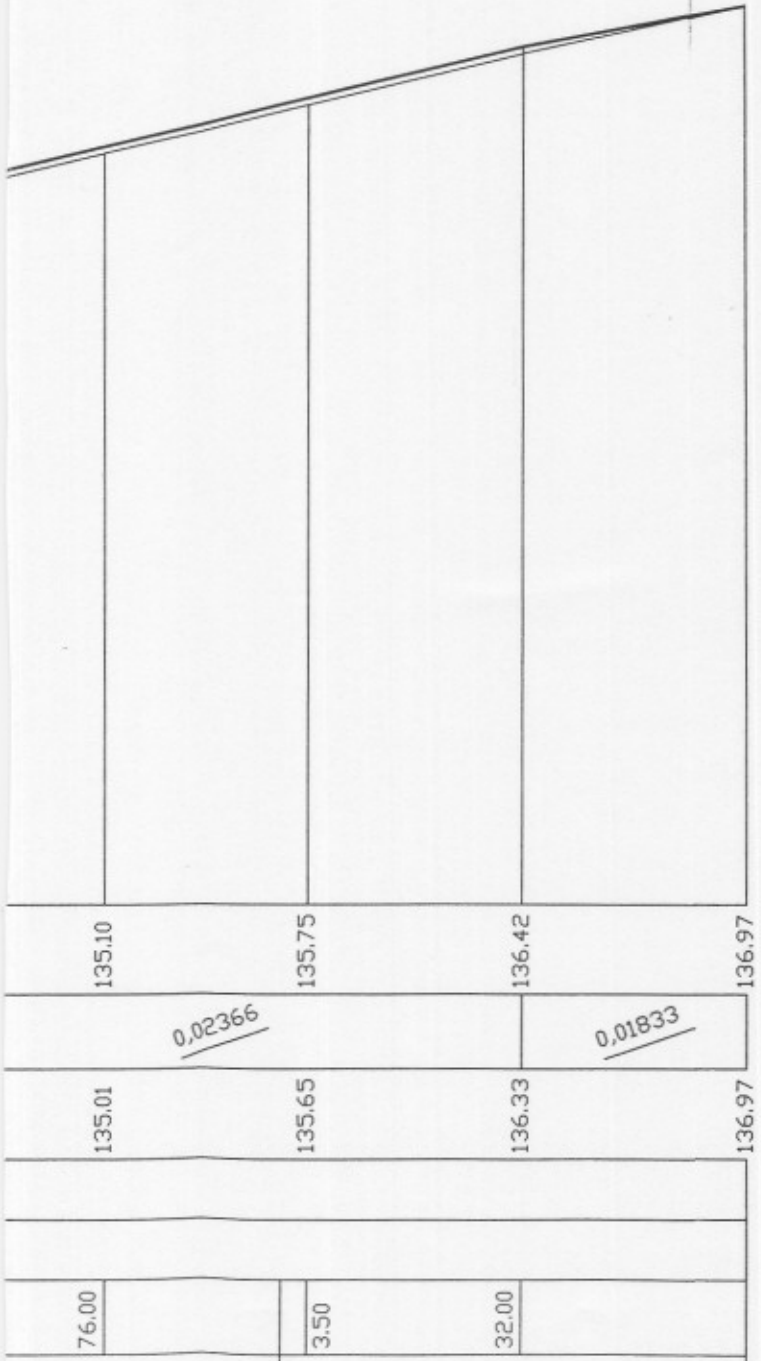
$\frac{0.00836}{}$

$\frac{0.0146}{}$

$\frac{0.01821}{}$

130

AS



6

K.T.km 2+662